

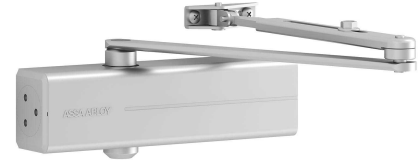
# Rack and pinion

DC140

## Rack and pinion

### Application:

ASSA ABLOY Door Closers are ideal for almost any structural conditions, whether they are used in public, residential or commercial buildings or on light or heavy doors.



### Specification:

- Door closer with rack and pinion technology and height-adjustable guide rail G195 or standard guide rail G193
- Closing force configurable EN size 2/3/4/5, for doors up to 1250 mm wide
- Can be used in four installation types: hinge and non-hinge sides in standard and frame installation
- Can be used with integrated concealed mounting plate, suitable for fire and smoke protection doors
- Can be used for left and right-handed doors
- Axis continuously height adjustable up to 14 mm
- Closing speed, latching speed and backcheck adjustable via front facing regulating valves
- Thermodynamic valves for consistent performance
- Variable adjustable closing force
- Opening angle up to 170°
- Effective backcheck and latching speed range adjustable
- Large range of applications

### Standards:

- New EC Cert No 2812-CPR-AD5489
- CE Marked
- Suitable for fire and smoke protection doors
- Meets BS8300

### Finish:

- Silver EV1Silver EV
- White, similar to RAL9016
- Brown, similar to RAL8014
- Black, similar to RAL9005
- Customized finishes available on request

### Variants:

Code	Description
DC140A-1	DC140A DOOR CLOSER SIZE 2/3/4/5 TEMPLATE WITH ARM & PA BRACKET SILVER
DC140A/TRIM-1	DC140A DOOR CLOSER SIZE 2/3/4/5 TEMPLATE WITH ARM & PA BRACKET AND TRIM SILVER